



Slice Commander

Control huge data volumes

Build the parts where common CAD software fails. View and analyze them layer-by-layer. Save time on advanced part editing features. Optimize part quality and machine speed. Export directly to machine-specific files. A must-have for Professionals.



learn more at www.netfabb.com/slicecommander

The netfabb Slice Commander is a complementary tool for netfabb Studio Professional which helps you to dissect 3D files into sets of 2D slice layers. Before building parts, you can view and analyze them in 2D and edit them with commands similar to what is generally used for 3D data.

Boolean Operations

Slicing and Slice Editing

Precise Offsets

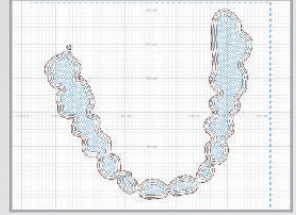
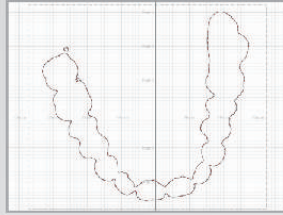
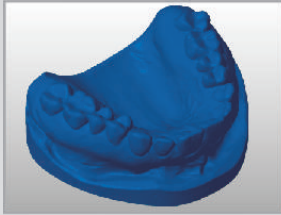
Toolpath Creation

Hatching and Filling

Position and Scale

Data Reduction

Tune Exposure Strategy

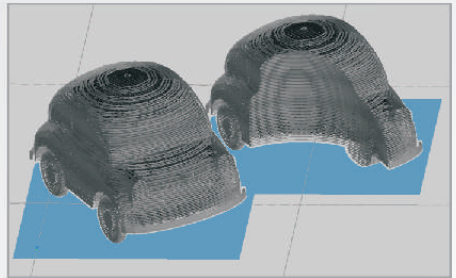
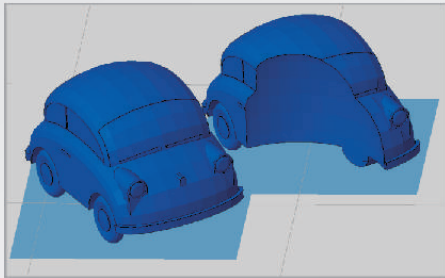


Process layer-by-layer

Advanced functions such as boolean, merging, self-intersection removal, offsets and splitting are processed layer-by-layer and without calculating triangle meshes. This saves time and huge amounts of memory. High-resolution models can be handled with ease and the limits of complexity are erased.

Increase machine speed and improve surface quality

Remove unnecessary corner points to reduce data volume, increase machine speed and improve your part surface.



Maximize Output

Save your parts as machine slice files, image files, vector graphics or convert them back to three-dimensional STL files. Transfer them directly to your machine to save time in the build setup and pack more parts in a job. File formats include SLI, CLI, SSL, SLC, ASC, STL, PNG, BMP, SVG and many more.

Promotional Code

netfabb GmbH ■ Eichenbühl 10 ■ 92331 Lupburg ■ Phone +49 9492 601 6400

www.netfabb.com